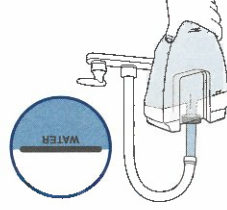


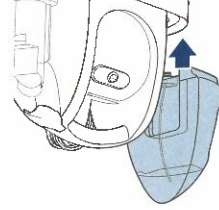
WARNING

To reduce the risk of fire and electric shock due to internal component damage, use only BISSELL cleaning formula intended for use with this machine.

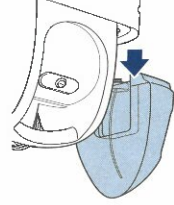
4. Fill with warm (140°F/60°C MAX) tap water to the WATER line. Do not use boiling water. Do not heat water in the microwave.



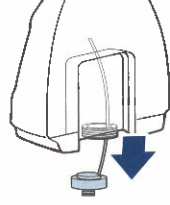
5. Replace the tank by lining up the vertical guides on the left side of the machine with the indentations on the tank and slide it down into place.



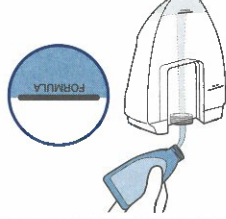
1. Remove the clean water tank by lifting it straight up and then away from the machine.



2. Unscrew the black cap at the bottom of the tank.



3. Add BISSELL formula to the FORMULA line.



Note: Add 1 ounce of any BISSELL® Boost, if desired.

Filling the Clean Water Tank

Certain trademarks used under license from The Procter & Gamble Company or its affiliates.

BISSELL Spot & Stain with Febreze
Eliminates odor with a bright and refreshing spring scent.



BISSELL PET Spot & Stain
Removes tough pet stains & odors.



Formula

Keep plenty of genuine BISSELL® formula for portable spot cleaning machines on hand so you can clean whenever it fits your schedule.

Cleaning Formulas at BISSELL.com

Find more formulas at BISSELL.com

Boost

Add to BISSELL Formula to increase its effectiveness.



BISSELL Pet OXY Boost
Add to formula for pet odor and permanent stain removal.



BISSELL OXY Boost
Add to formula for permanent stain removal.

Before You Clean

1. Vacuum to remove loose dirt from area to be cleaned.
2. Spray any BISSELL® stain pretreat formula to soiled areas or stains.
3. Allow to sit for at least 3 minutes.
4. Clean following instructions below.

Choose Your Desired Tool

Tools vary by model.



3" and 4" Tools
Great for carpet stains, furniture and other hard-to-reach surfaces.



Pet Stain Tool
Deep injection technology cleans the carpet from bottom up to quickly and thoroughly remove pet stains.

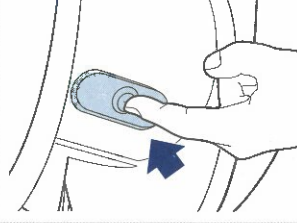


Hydrosinse™ Self-Cleaning Hose Tool
Use to clean out your hose after each use.

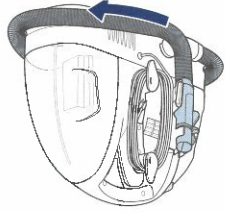


Stain Trapper Tool
Messers are collected and stored in a separate, removable container, keeping pet and other liquid messes out of your machine.

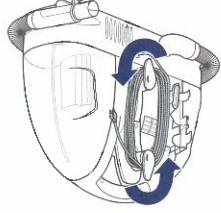
4. Press the power button beneath the handle to turn it ON.



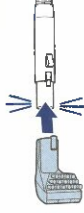
1. Release the flex hose from the hose grip bracket latch. Unwrap completely from around the machine.



2. Unwind cord and plug into outlet.



3. Choose your tool and snap on the end of the hose.

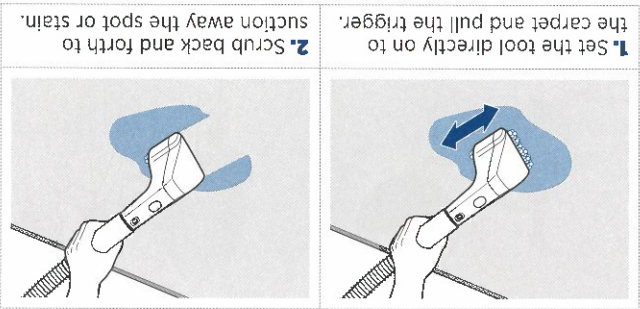


Getting Ready to Clean

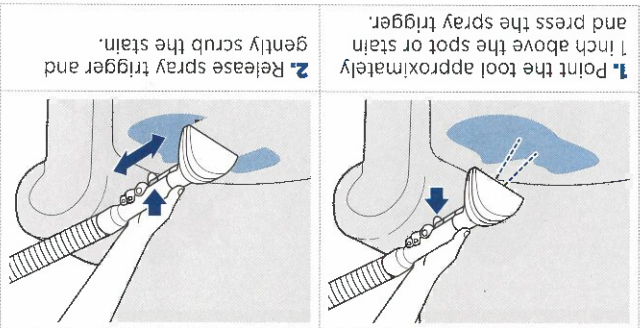
Tools vary by model. To shop all tools and accessories, visit BISSELL.com/parts

IMPORTANT: Check the manufacturer's tag before cleaning upholstery. If manufacturer's tag is missing or not coded, check with your furniture dealer. Test a small, hidden area for colorfastness and examine when dry. If color is affected do not use. Do not use on silk or velvet.

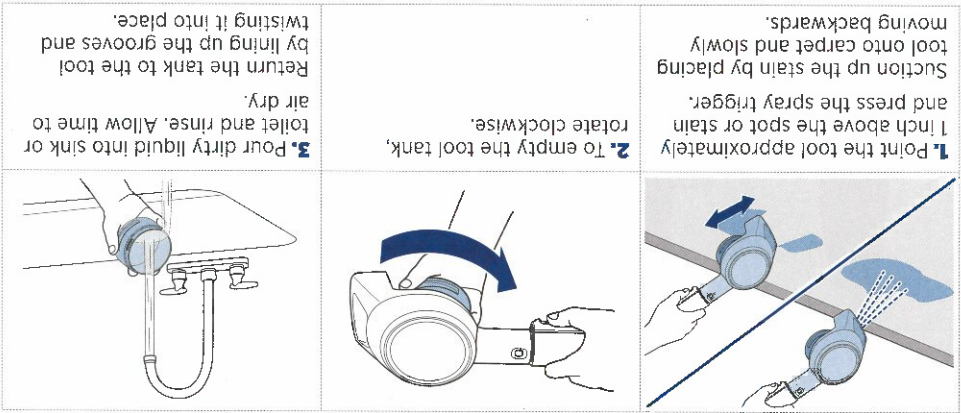
WARNING Keep spray away from face. Failure to do so may result in personal injury.



Deep Stain Tool
Note: Always keep tool in contact with carpet to avoid over-spraying.



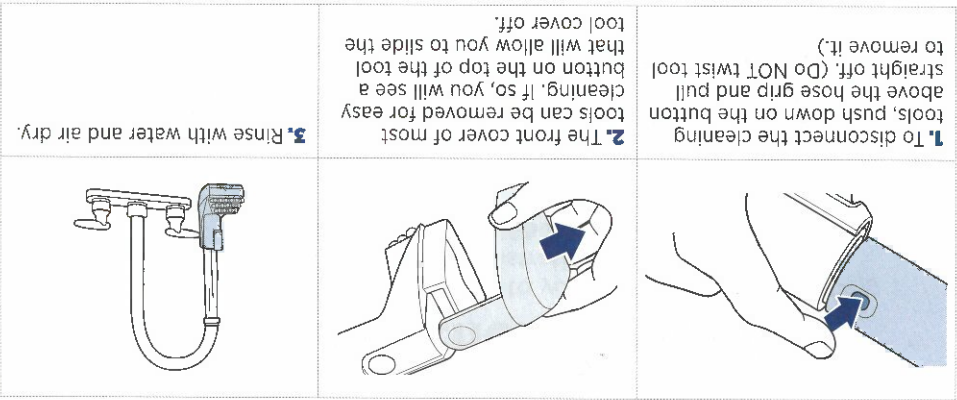
3'', 4'', and Spraying Crevice Tools



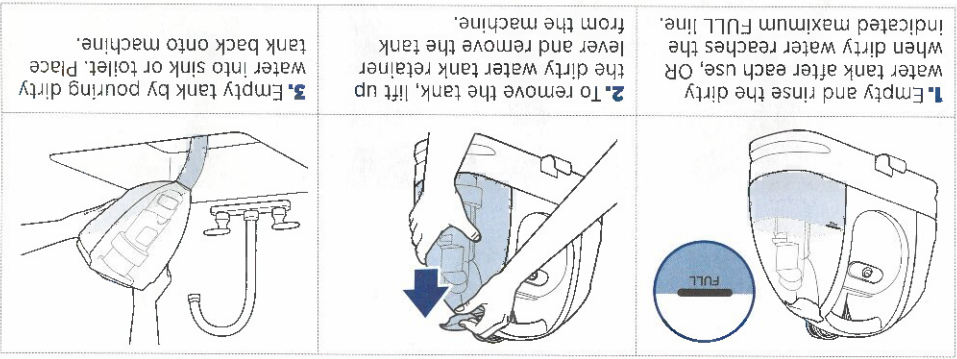
Stain Trapper Tool

▶ Search your tool on support.BISSELL.com for how-to videos.

Using the Tools

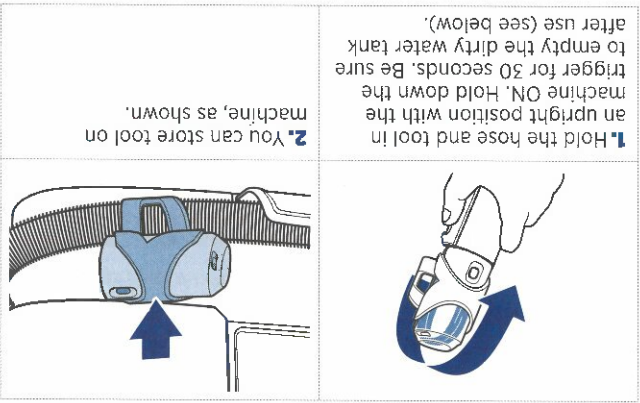


Cleaning the Tools



▶ Go to support.BISSELL.com for how-to videos.

After-Cleaning Care



HydroRinse™ Tool

Using the Tools
 (continued)